

BOLT TENSIONERS

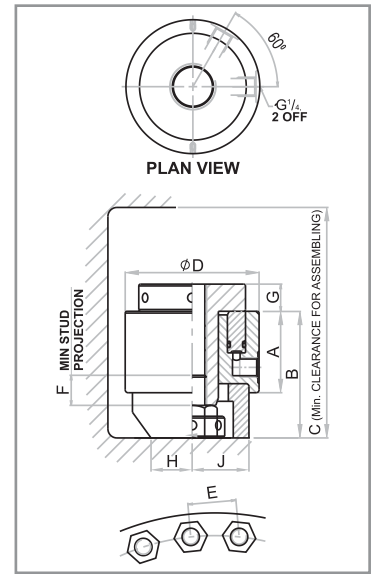


Torc Star Bolt Tensioners are used for swift method of tightening & opening by tensioning bolt / studs. After applying the oil pressure by Torc Star Pneumo Hydraulics pump, load cell lift the puller up side i.e. tightly gripped with stud bolt thread. This cause release of nut and it becomes loosen. Nut can be easily rotated with nut rotating Socket and Tommy bar and tightening completed the same process is used for swift loosening operating It mainly consists of Load Cell, puller, nut rotating sockets & bridge.

Typical Applications

- Pipeline Flanges
- Pressure Vessels
- Valves and Pumps
- Manways
- Heat Exchangers
- Diesel Engines
- Cranes
- Presses
- Steam and Gas Turbines
- Shaft Couplings
- Coal and Rock Grinders
- Catalyst Reactors
- Wind Turbines
- Electric & Steam Generators

Model No	Bolt / Stud Size		Cylinder (tons)	Stroke Cap (mm)	Effective Area (cm ²)	Dimension								Approx. Weight (Kg)	
	(metric)	(Inch)				A	B	C	D	E	F	G	H		J
THT-3	M16	-	30	10	15.7	62	90	168	75	49	28	16	30	32.5	2
	M18	3/4"								49					
	M20	-								51					
	M22	7/8"								51					
	M24	1"								60					
THT-5	M27	1 1/8"	50	15	33	60	106	187	102	60	44	22	36	47	4
	M30	-								72					
	M33	1 1/4"								74					
	M36	1 3/8"								76					
THT-9	M39	1 1/2"	90	15	60	60	120	208	133	88	56	28	49	61	6
	M42	1 5/8"								90					
	M45	1 3/4"								94					
	M48	1 7/8"								100					
	M52	2"								104					
THT-13	M48	1 7/8"	125	15	83	62	135	231	163	110	68	34	59	73	10
	M52	2"								112					
	M56	2 1/4"								118					
	M60	-								126					
	M64	2 1/2"								126					
THT-19	M64	2 1/2"	185	15	123	62	150	254	193	136	80	42	66	86.5	15
	M68	-								144					
	M72	2 3/4"								146					
	M76	3"								154					
	M76	3"								162					
THT-27	M80	-	265	15	176	73	180	286	233	162	104	48	77	110	25
	M85	3 1/4"								162					
	M90	3 1/2"								174					
	M95	3 3/4"								185					
	M100	4"								200					
										212					



ULTRA HIGH PRESSURE HAND PUMP PNEUMO HYDRAULIC PUMP

(Max. Working Pressure 1600 bar)



Model No	Pressure 2 nd stage	Usable Oil Vol.	Wt
THP 2P2-5-2	1600 bar	1.5 Ltrs	7 kg
THP 2P2-5-4	1600 bar	2.4 Ltrs	10 kg

Technical Data :

Model No	TPP-1BT
Pressure Ratio	1:370 bar
Outlet Pressure Max.	2000 bar
Utilities	OIL
Flow Max	Depending on Application
Connection Inlet	Drive Air-3/8" BSPF
Connection Outlet	9/16-18 UNF(F)
Air Drive Pressure	Max. 6 bar
Weight	20kg. without Oil



TORQUE WRENCH

PNEUMATIC TORQUE WRENCH



Technical Data

TYPE	Torque (Nm)	Square drive min-max	Gear diam. (mm) D	Height (mm) H	Weight (kgs)	No-load speed
TPT-80	40-880	3/4" & 1"	88	360	6	19
TPT-120	40-1200	1"	88	360	7	19
TPT-250	70-2500	1"	88	410	7	7,5
TPT-400	70-4000	1 1/2"	88	410	8	7,5
TPT-500	100-5000	1 1/2"	88	460	9	2
TPT-600	400-6000	1 1/2"	130	420	12	2,8
TPT-1000	450-10000	1 1/2"	130	460	16	1,8
TPT-1200	600-12000	1 1/2"	175	470	18	1,8

ELECTRIC TORQUE WRENCH

Technical Data

TYPE	Torque (Nm) min.-max.	Gear diam. (mm) D	Height (mm) H	Weight (kgs)	No-load speed	Square Drive
TET-81	150-850	88	540	8	16	3/4" & 1"
TET-101	280-1200	88	540	8.2	14	1"
TET-241	360-2500	88	570	9.5	10	1"
TET-351	360-3500	88	580	10.4	9	1 1/2"
TET-501	700-5000	88	630	12.6	3	1 1/2"
TET-601/1	816-6000	130	615	15.9	6.5	1 1/2"
TET-901	1024-10000	130	645	18.9	2,5	1 1/2"

All above Models of Electric & Pneumatic Torque Wrench are also available in angle design.



Note : Any other Non Standard/Customized items can be manufactured on request.

TORC STAR BOLTING TOOLS

OFFICE : No. 227, Lodha Supremus 2,
Road No. 22, Wagle Estate, Thane (W) 400604.
Mob.: +91 **9867344870** / +91 9820120501
Email: sales@torcstar.com | Website: www.torcstar.com

FACTORY :
Plot No. 268, Pandey Industrial Estate,
Pokhran Road No. 1, Upvan, Thane (W) 400 606, India.
Tel.: 91-22-2585 3106 / 2588 4343

USA OFFICE :
1736 125th Avenue SE
Bellevue, WA 98005
Tel.: #334-714-0945
Email: usa@torcstar.com



ISO 9001:2008

www.torcstar.com

