



TOOL BALANCERS

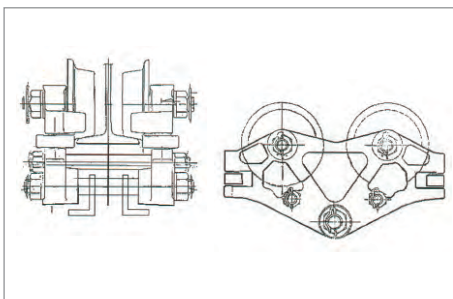


MODEL NO.	BALANCING CAPACITY		TRAVEL in Mtr.	ROPE Dia. Mm.	UNIT Weight
	Min. Kgs.	Max. Kgs.			
E-1	0.25	1.5	1.5	2.0	1.0
E-2	1.0	2.0	1.5	2.0	1.0
E-3	1.0	3.0	1.5	2.5	1.8
E-5	2.5	5.0	1.5	2.5	1.8
E-9	4.5	9.0	1.5	4.0	4.2
E-15	9.0	15.0	1.5	4.0	4.5
E-22	15.0	22.0	1.5	5.0	9.0
E-30	22.0	30.0	1.5	5.0	9.5
E-40	30.0	40.0	1.5	5.0	10.5
E-50	40.0	50.0	1.5	5.0	11.2
E-60	50.0	60.0	1.5	5.0	12.6
E-70	60.0	70.0	1.5	5.0	13.2
E-85	70.0	85.0	1.5	8.0	25.0
E-100	85.0	100.0	1.5	8.0	27.5
E-120	100.0	120.0	1.5	8.0	30.5
E-150	120.0	150.0	1.5	8.0	32.0
E-180	150.0	180.0	1.5	8.0	35.0
E-200	180.0	200.0	1.5	8.0	36.0

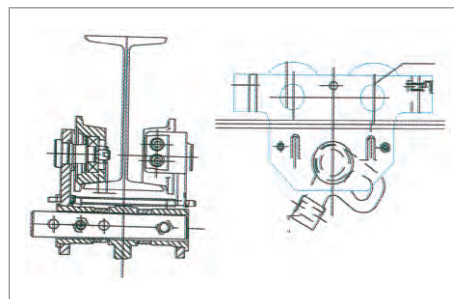
TORC STAR OVERHEAD (I-BEAM) PUSH PULL TROLLEY

'Torc Star I-Beam Trolley' has been designed specially to be used alongwith Spring Balancers in weld shop of Automobiles on standard I-Beam (150 x 75) or (200 x 100) for 3 Dimensional movement on X-Y-Z axes. 'Torc Star' Trolleys are rugged in construction made from steel side plates graded cast Iron Rollers with good quality Roller Bearings, Steel shafts, Nitrile rubber shock adsorbs and powder coated for good surface finish. These Trolleys are available in 3 modes for suspending TRANSFORMER, WELDING GUN and KICKLESS CABLE.

Transformer / Bridge Rail Trolley Transformer or Gun Trolley

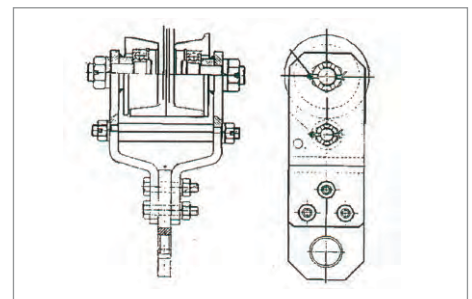


MODEL	TOT - 01
Capacity	1000 mm
Minimum radius for curve	1500 mm
available beam	150x75x5.5 mm
weight	15 kgs



MODEL	TOT - 02
Capacity	500 mm
Minimum radius for curve	1000 mm
available beam	75x150x5.5 mm
weight	6.5 kgs

Gun / Cable Trolley



MODEL	TOT - 03
Capacity	250 mm
Minimum radius for curve	1000 mm
available beam	150x75x5.5 mm
weight	6 kgs



Please observe safety advices